

Simple Face Masks



Materials needed:

- Cotton fabric
- Ties may be any of these below:
 - o Rope elastic or Beading Cord elastic (2 @ 7" knotted at both ends)
 - o 1/4" flat elastic (2 @ 7")
 - o Fabric ties (2 @ 30")
 - o Ribbon, or bias tape (2 @ 30")

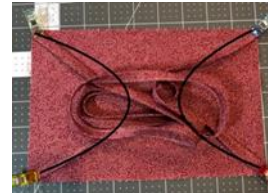
If making ties from fabric, these are instructions::

1. Cut a strip of fabric 1/2" x 30"
2. Fold each long edge to the center and press
3. Fold in half lengthwise and press again, stitch along foldline.



Instructions for Mask :

1. Cut 2 pieces of fabric 9 x 6



2. Lay ties on top of right side of the fabric.
The process is the same for all the different type of ties.

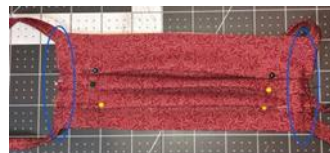
3. Place the other piece of fabric face down and pin the corners.



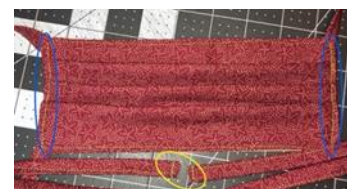
4. Beginning at the center of the bottom sew to the first corner and back tack. Pivot and sew up to the next corner, back tack. Repeat for all 4 corners. Leave approximately 2-3" gap for turning. .



5. Turn right side out and press.
Pin three tucks on each side of the mask.
Make sure the tucks are the same direction.



6. Sew all the way around the mask, reinforcing the ends with the tucks.
Cut fabric ties in half, if using fabric or bias tape, sew across the ends. **DO NOT CUT ELASTIC TIES!**
If using ribbon, singe with a small flame.



Special Thanks to Cas Wucher, Wilson County Seamstress, for modifying the directions from The Turban Project to incorporate the use of fabric ties.